



EVENTS WINTER 2025-26

Preserving the Recent Past



Office located in **GARNER HOUSE** at Memorial Park
 840 N. Indian Hill Blvd., Claremont CA 91711 | Open Mon-Fri 10am-3pm
GINGER ELLIOTT CENTER/GALLERY is also located in Memorial Park
 909.621.0848 | Email: info@ClaremontHeritage.org | ClaremontHeritage.org



DECEMBER

HAPPY HOLIDAYS! Our Office will be Closed Wednesday, Dec 24th - Monday, January 5th



THURS DEC 11 | 5:00-9:00pm

Annual LOS POSADAS CELEBRATION | "Navidad en la Plaza"

Padua Hills Theatre, 4467 Padua Avenue, Claremont
 Enjoy an evening immersed in holiday joy with traditional Mexican Folklorico dancing, along with live music, delicious food, and creative vendors in the beautiful courtyard.
 \$30 / \$15: Age 14 years and under — **Sells Out in Advance Annually**



NOW THRU SUN DEC 14 Discovering FOSTER RHODES JACKSON Exhibition

The Search for Organic Architecture

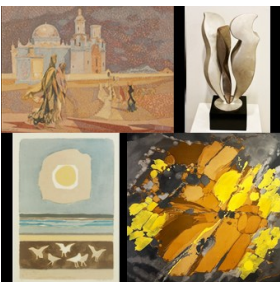
Free Admission | Mon-Fri 10am-3pm | Enter via Garner House
 GINGER ELLIOTT CENTER (adjacent to Garner House)
 in MEMORIAL PARK, 840 N. Indian Hill Blvd.

Watch brief video



Closing Reception Sun Dec 14 | 4:00-6:00pm

Alan Hess will give a short gallery talk about FRJ and the exhibit



EXTENDED THRU SUN DEC 21 at 12noon

YEAR-END ONLINE HOLIDAY ART AUCTION - Bid Now - More Items being Added

Join us for another online auction of noted Claremont Artists!
 All your favorites from Millard Sheets to Phil Dike to Jean Goodwin Ames,
 Karl Benjamin to Rupert Deese to Mike Hill.



All original art by noted artists - Low Starting Bids and Buy-It-Now prices that are up to 60% below the value.

JANUARY | FEBRUARY

JAN 3 FIRST SATURDAY ARTWALK

Opening Reception for **KARL BENJAMIN - Student's Work 1953 – 1963** | 6:00 - 9:00pm | Ginger Elliott Gallery
Closing Reception: Saturday, Jan 31 | 6-9pm

JAN 11 ANNUAL MEMBERSHIP MEETING | 1:00pm | Ginger Elliott Center (adjacent to Garner House)

FEB 7 FIRST SATURDAY ARTWALK

Opening Reception: **Sculptor JOHN EDWARD SVENSON** | 6:00 - 9:00pm | Ginger Elliott Gallery
Closing Reception: Saturday, Feb 28 | 6:00-9:00pm